

The Woodward Model



The Woodward Model

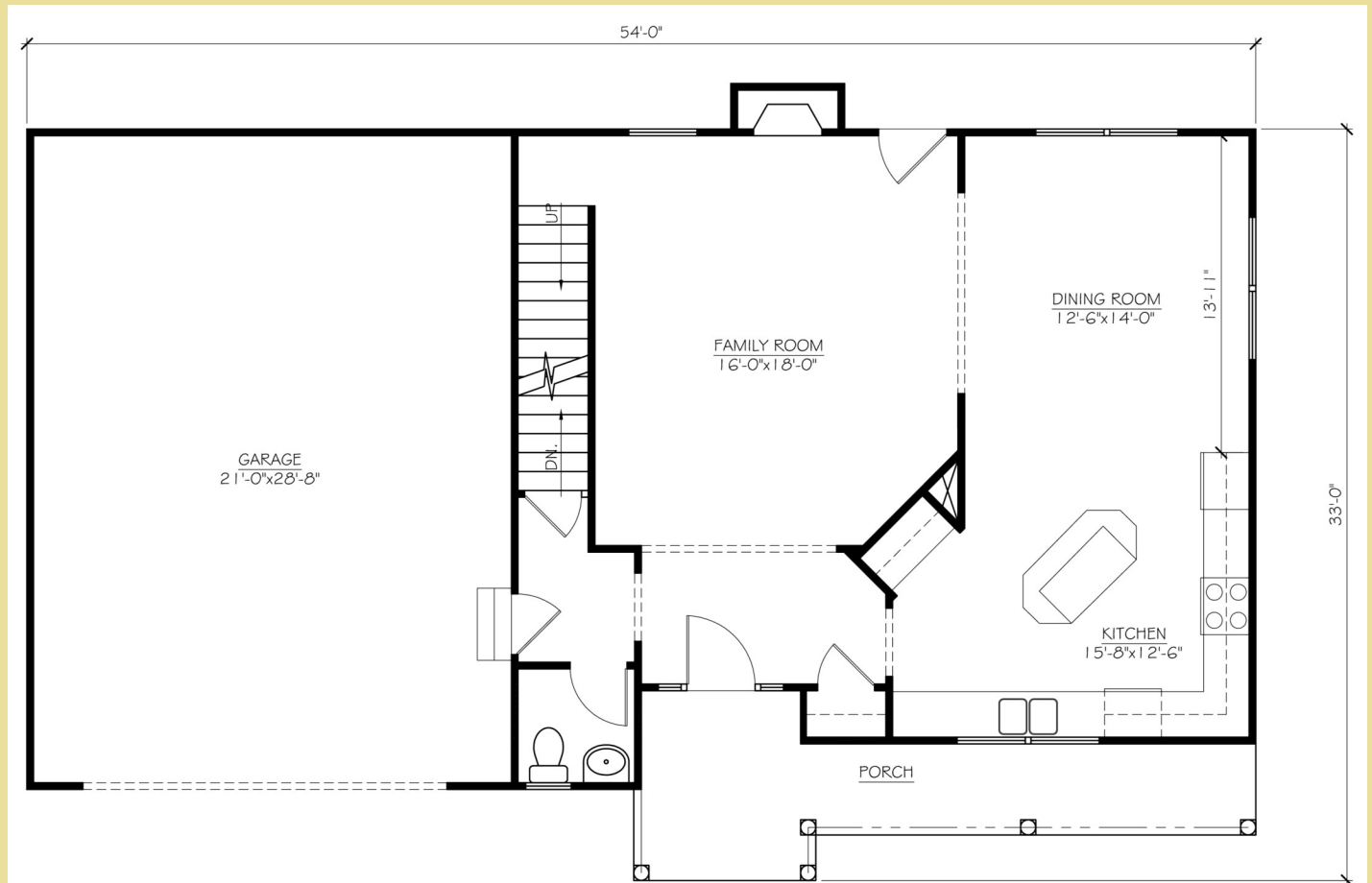
The Woodward Model is a spacious 4 bedroom home with an open floor plan that is flexible and can be customized to meet your individual living style. Our standard layout has four large bedrooms, a second floor laundry and generous closet space. The large master suite comes standard with a well appointed master bath which includes a large garden tub, shower, walk-in closet and double vanity. The fourth bedroom / bonus room over the garage can be divided into two spaces if the buyer desires. There are many other options available including hardwood floors, custom kitchen choices, nine foot first floor ceilings, gas fireplace, walk-out basements when grade allows and a finished basement. The front elevation can be completed with Stone, Brick, Siding or a combination of all three. We welcome your custom revisions! Please inquire with one of our sales staff for more information and options.

Features

- **4 Large Bedrooms**
- **2.5 Bathrooms**
- **Many options and upgrades available**
- **8 or 9' 1st Floor Ceilings are available**
- **Oversized Extra Deep 2 Car Garage is Standard**
- **Siding, Brick or Stone Elevations**
- **2nd Floor Laundry**
- **Approx 2200 sq ft**
- **Finished basement available**

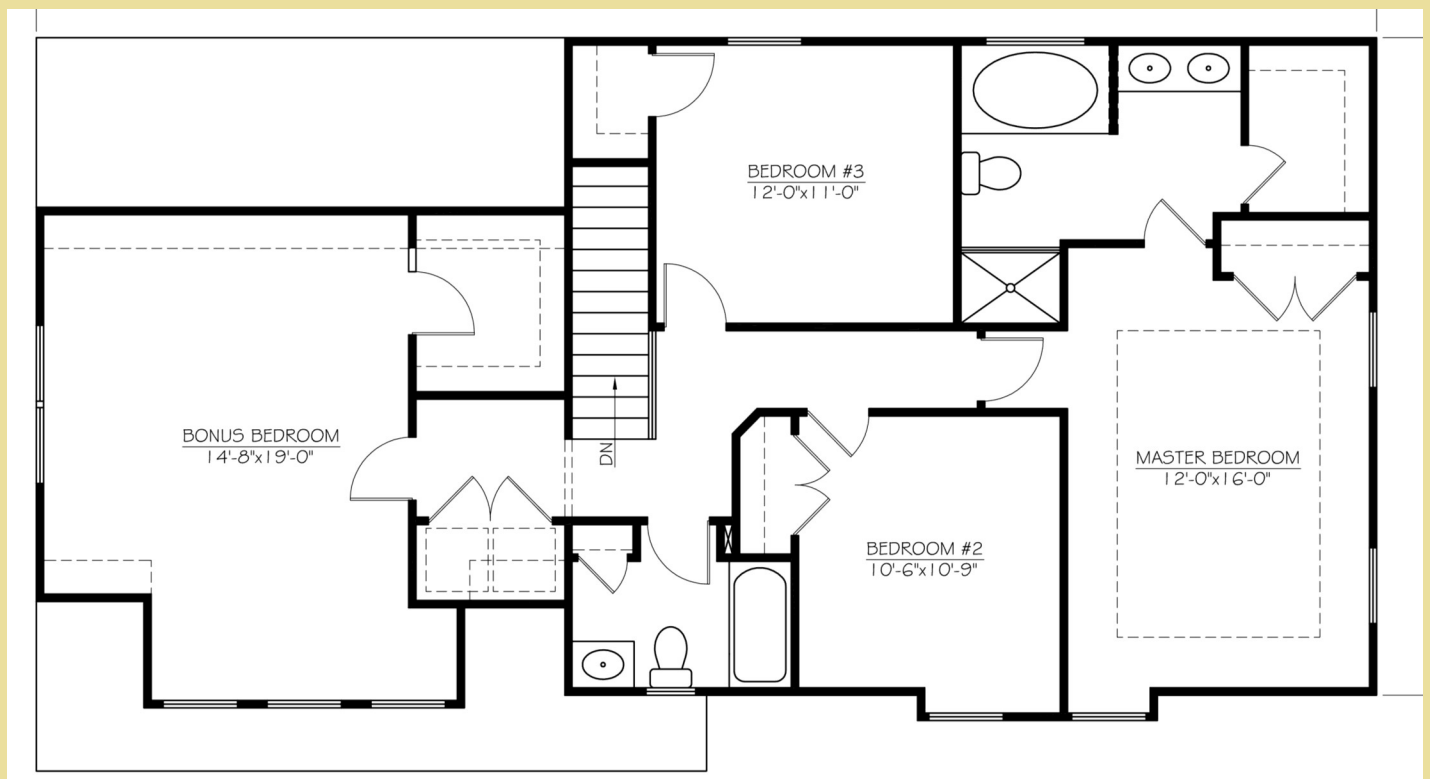
For More Information contact P.J. Bale
302-328-0280 x100 or by email PJ@FirstStateInc.com
www.FirstStateInc.com

“ The First Floor Layout ”



Most Layouts Can Be Customized To Meet Your Individual Needs - Please Ask Our Sales Staff!

“ The First Floor Layout Showing Options for the a First Floor Great Room, Fireplace and Two Car Garage”



Most Layouts Can Be Customized To Meet Your Individual Needs - Please Ask Our Sales Staff!

“Some other views!”



Most Layouts Can Be Customized To Meet Your Individual Needs - Please Ask Our Sales Staff!