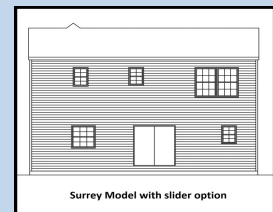


The Surrey Model



Surrey Model - Artist Sketch



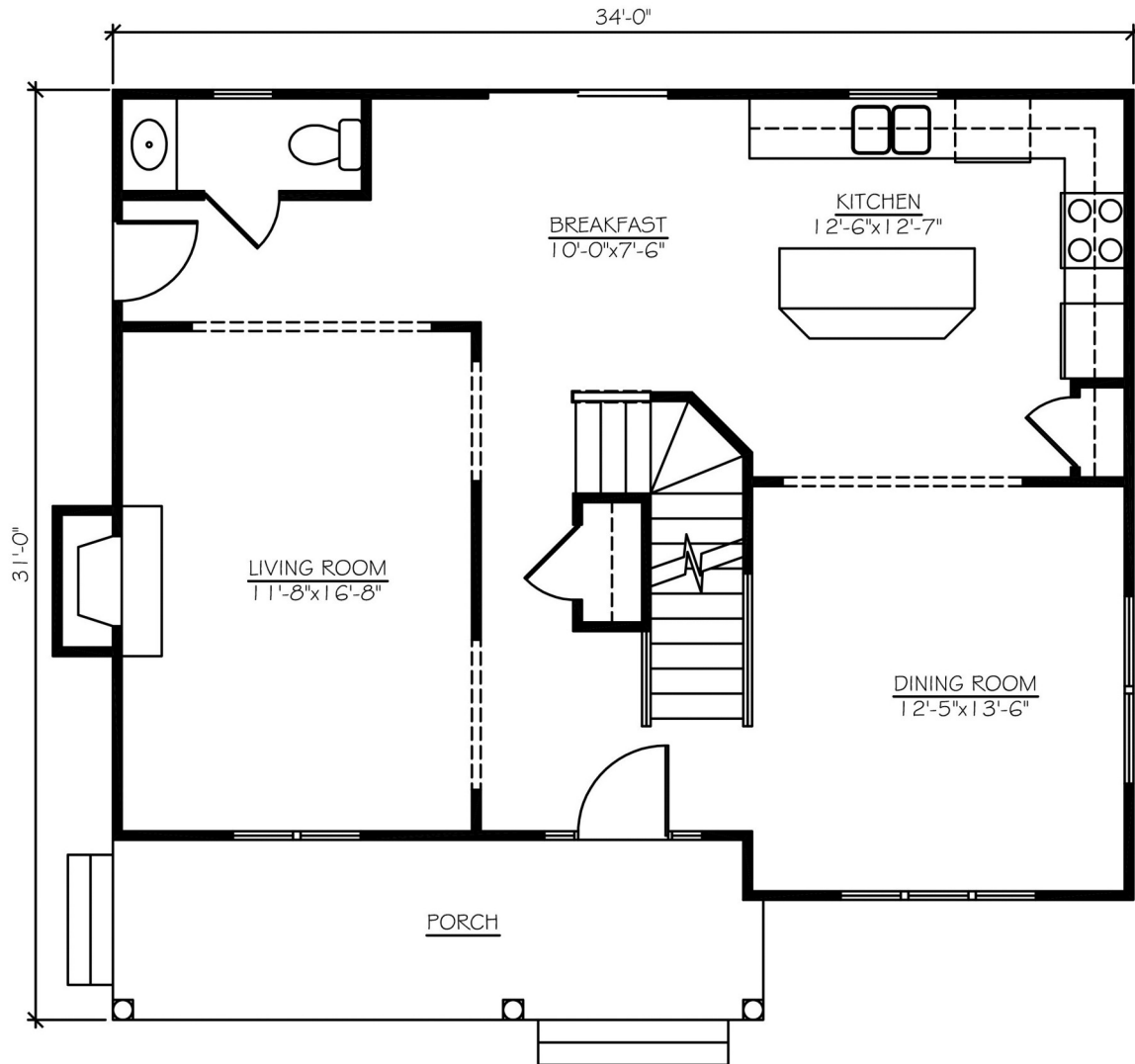
The Surrey Model is a spacious home with a floor plan that is flexible and can be customized to meet your individual living style. This model has many options available including a detached one or two car garage. When lot space allows we can add a morning room or additional family room. A finished basement is always an option. The base model is a 3 bedroom with 2.5 baths. The front elevation can be done in Stone, Brick or Siding. We welcome your custom revisions! Please inquire with one of our sales staff for more information and options.

- **3/4 Bedrooms**
- **2.5 Bathrooms**
- **Many options and upgrades are available**
- **Hardwood Flooring**
- **Ceramic Tile available**
- **1 or 2 Car Garage available**
- **Finished basement available**

**For More Information contact P.J. Bale
302-328-0280 x100 or by email PJ@FirstStateInc.com
www.FirstStateInc.com**

Standard Floor Layout

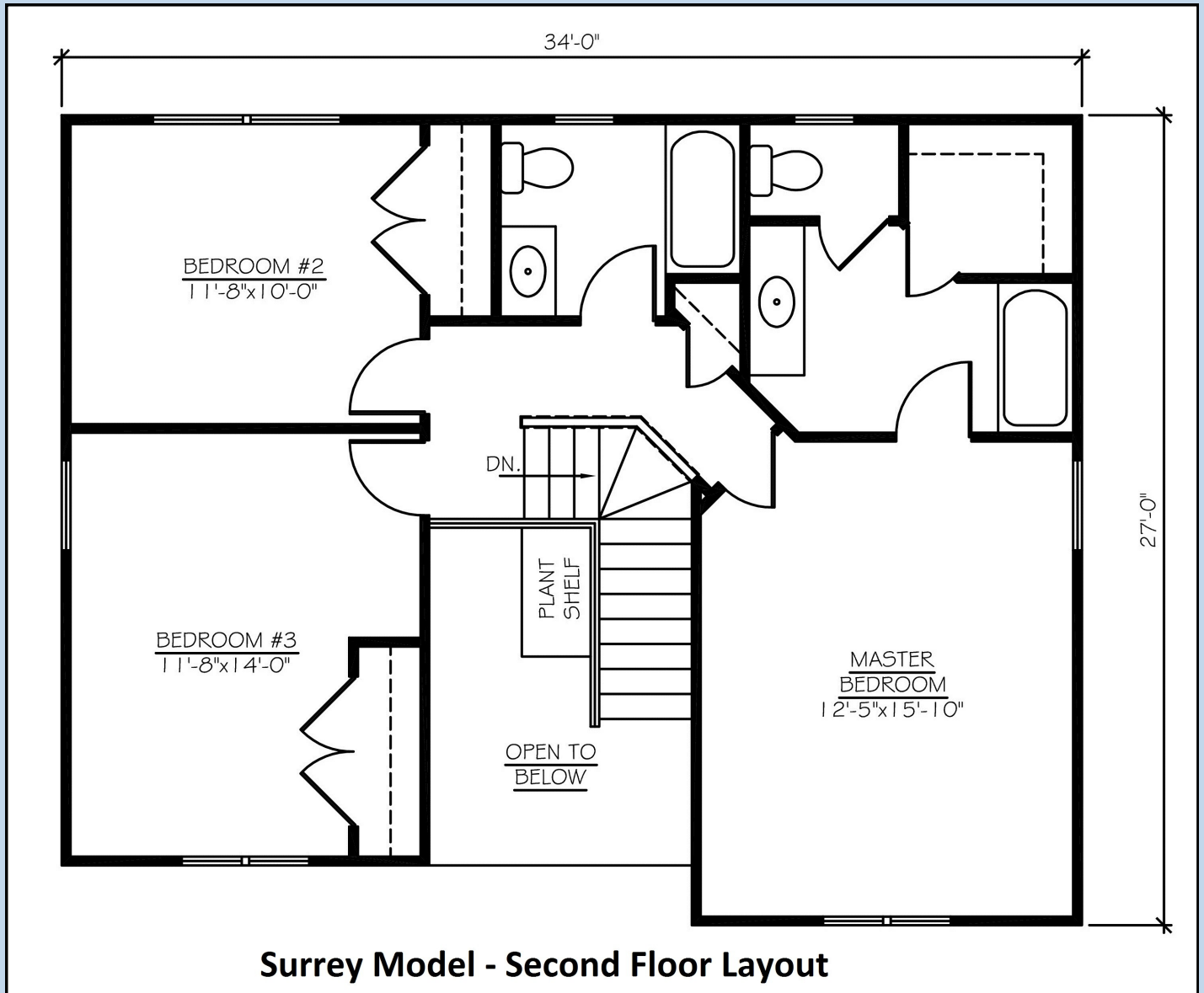
Side and Slider Door Versions Show



Surrey Model - First Floor Layout

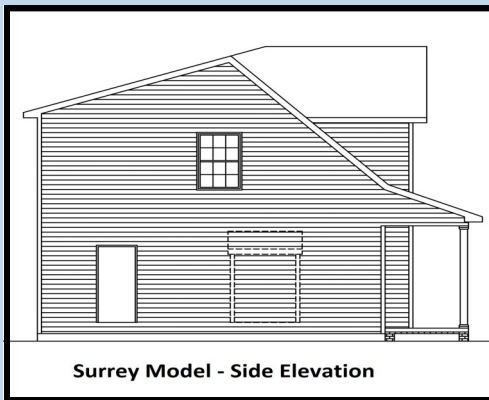
Most Layouts Can Be Customized To Meet Your Individual Needs - Please Ask Our Sales Staff!

“ The Standard Second Floor Layout ”

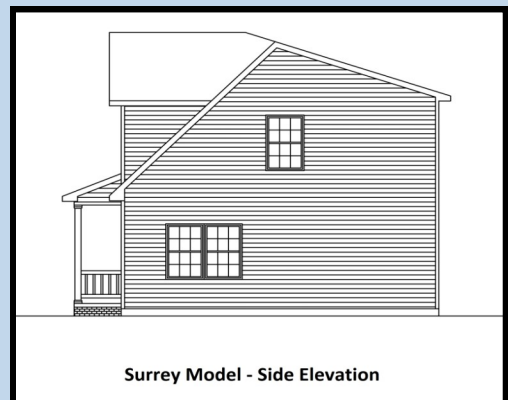


Most Layouts Can Be Customized To Meet Your Individual Needs - Please Ask Our Sales Staff!

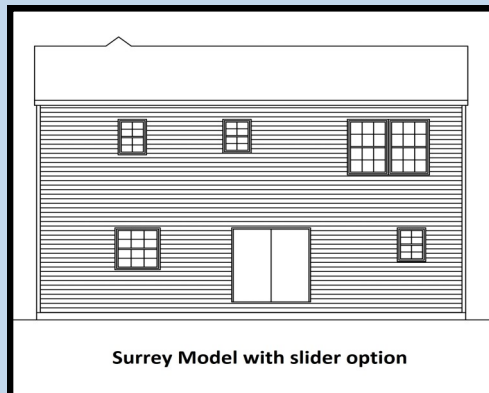
“ Elevation Views ”



Surrey Model - Side Elevation



Surrey Model - Side Elevation



Surrey Model with slider option

Most Layouts Can Be Customized To Meet Your Individual Needs - Please Ask Our Sales Staff!