

The Elm Model



The Elm Model

The Elm Model is a colonial styled home with a floor plan that is very open and flexible designed. This home can be customized to meet your individual living style. With a spacious and flowing floor plan there are numerous options and upgrades available. Add a two car garage, a full front porch or a fourth bedroom. There are many finishes available including hardwood floors, custom kitchen choices, a tiled baths, nine foot first floor ceilings, gas fireplace and a finished basement. The base model is a 3 bedroom home with 2.5 baths and a one car garage. The front elevation can be done in Stone, Brick, Siding or a combination of all three. We welcome your custom revisions! Please inquire with one of our sales staff for more information and options.

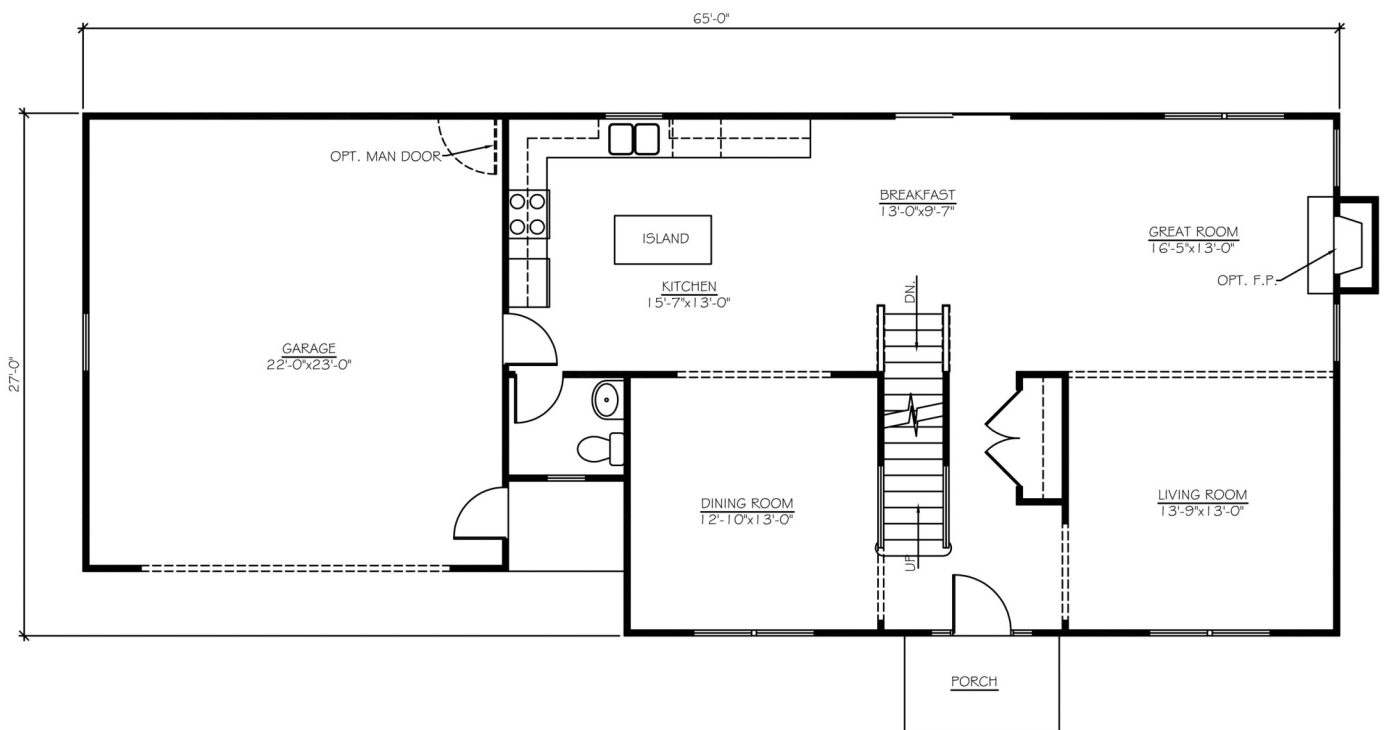


- **3 or 4 Bedrooms**
- **2.5 Bathrooms**
- **Full Front Porch Available**
- **Many options and upgrades available**
- **1 or 2 Car Garage**
- **8 or 9' 1st Floor Ceilings are available**
- **Hardwood Flooring and Ceramic Tile Options**

Jillian's Way 302-328-0280 x 542 www.JilliansWay.com

Peyton's Grove 302-328-0280 x 544 www.PeytonsGrove.com

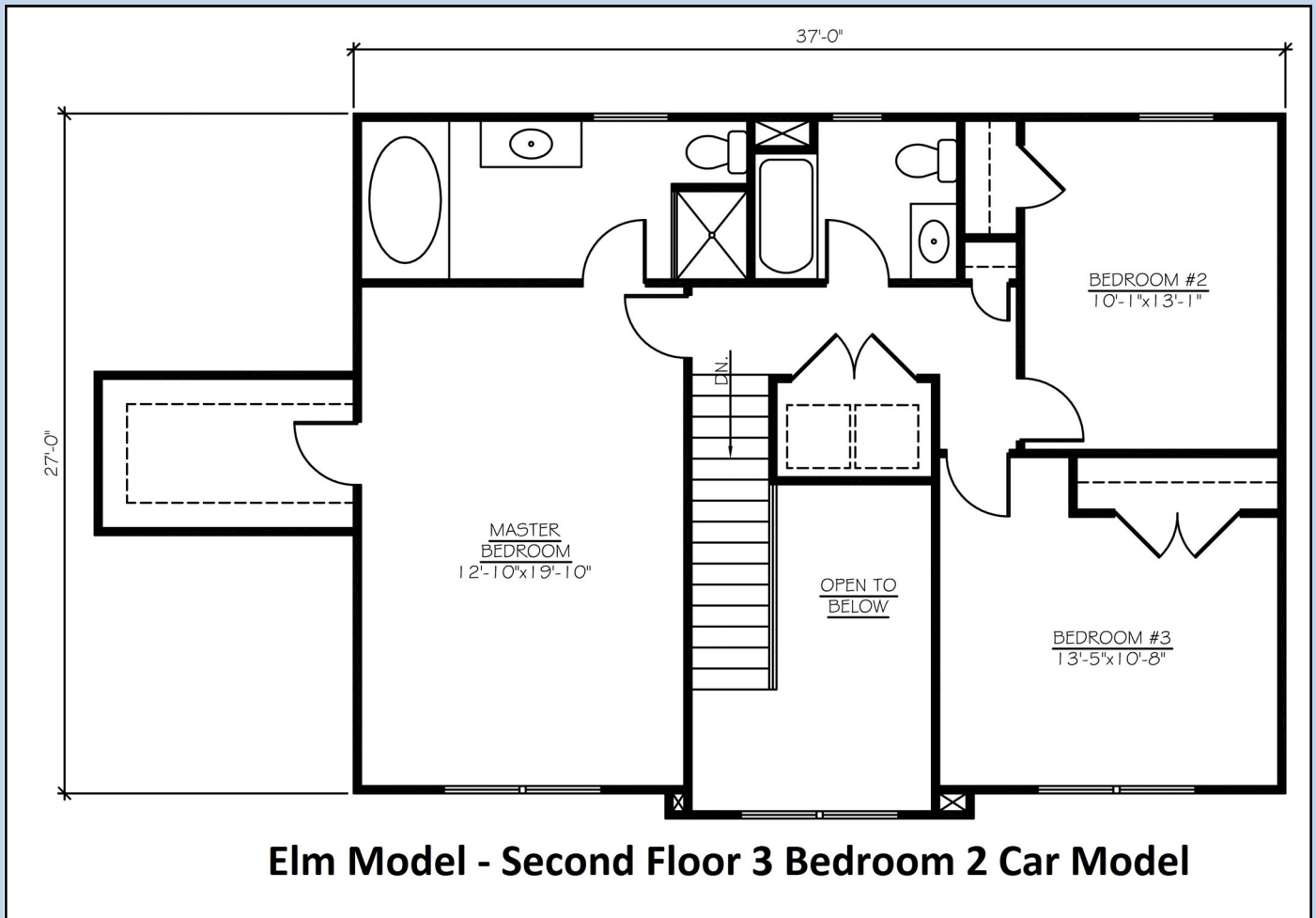
“ First Floor Layout with a 2 Car Garage ”



Elm Model - First Floor 2 Car Model

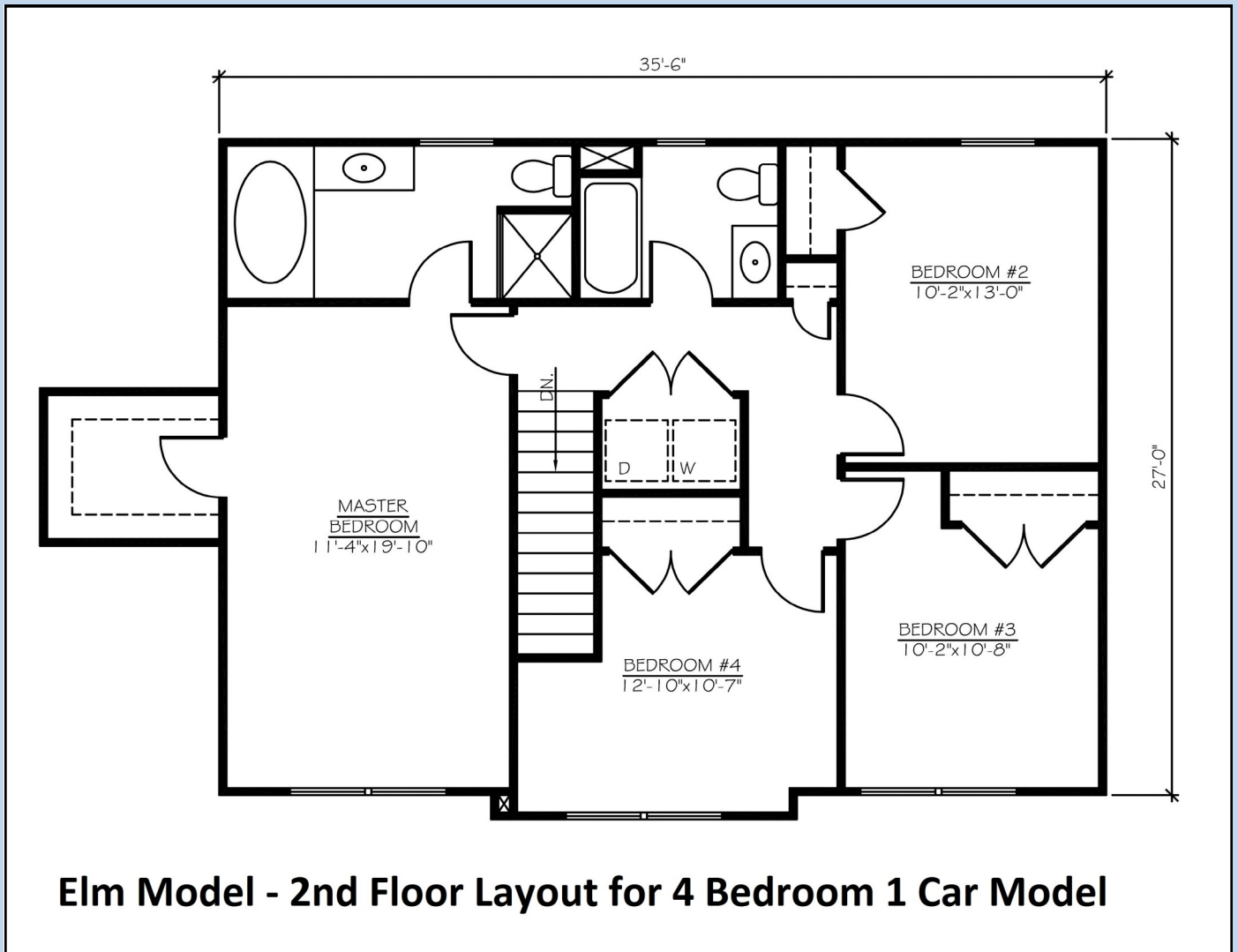
Most Layouts Can Be Customized To Meet Your Individual Needs - Please Ask Our Sales Staff!

“ The Second Floor Layout with 3 bedrooms / 2 Car Garage ”



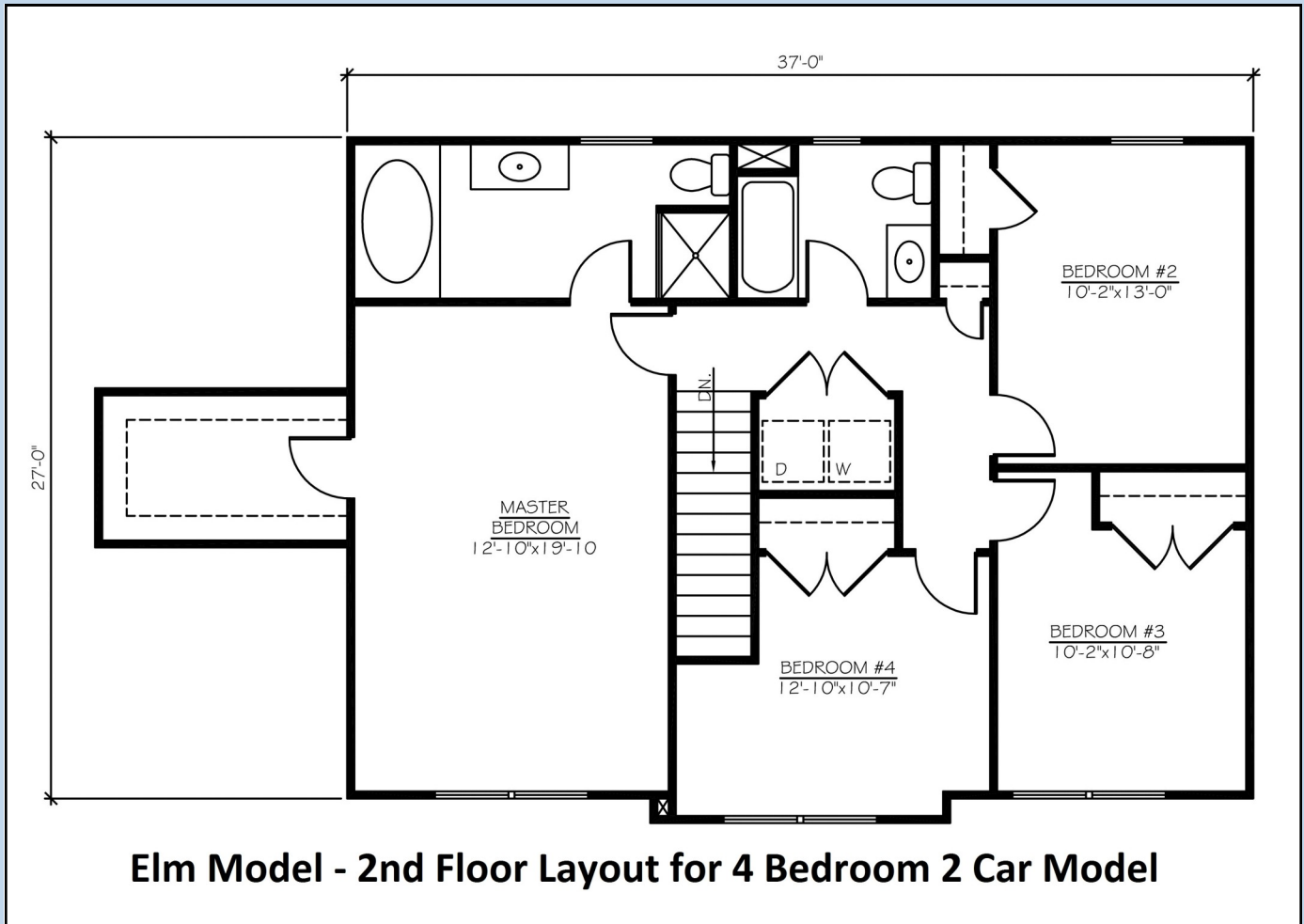
Most Layouts Can Be Customized To Meet Your Individual Needs - Please Ask Our Sales Staff!

“ The Second Floor Layout with 4 bedrooms / 1 Car Garage ”



Most Layouts Can Be Customized To Meet Your Individual Needs - Please Ask Our Sales Staff!

“ The Second Floor Layout with 4 bedrooms / 2 Car Garage ”



Most Layouts Can Be Customized To Meet Your Individual Needs - Please Ask Our Sales Staff!