

The Drawyer's Grandview



The Drawyer's Grandview Model

The Drawyer's Grandview is a colonial home with a formal dining room, living room as well as a great room and spacious sunroom. With many options available the list is too lengthy show them all. Some of the most popular include hardwood floors, custom kitchen choices, a gas fire-place and finished basement to mention a few. This home is perfect for an added walkup attic for additional living space. This model comes standard with a second floor laundry and multiple walk in closets. The base model is a 4 bedroom home with 2.5 baths. The front elevation can be done in Stone, Brick, Siding or a combination of all three. We welcome your custom revisions! Please inquire with one of our sales staff for more information and options. (The Drawyer's Grandview Model requires a wider lot than normal due to the width of the home)

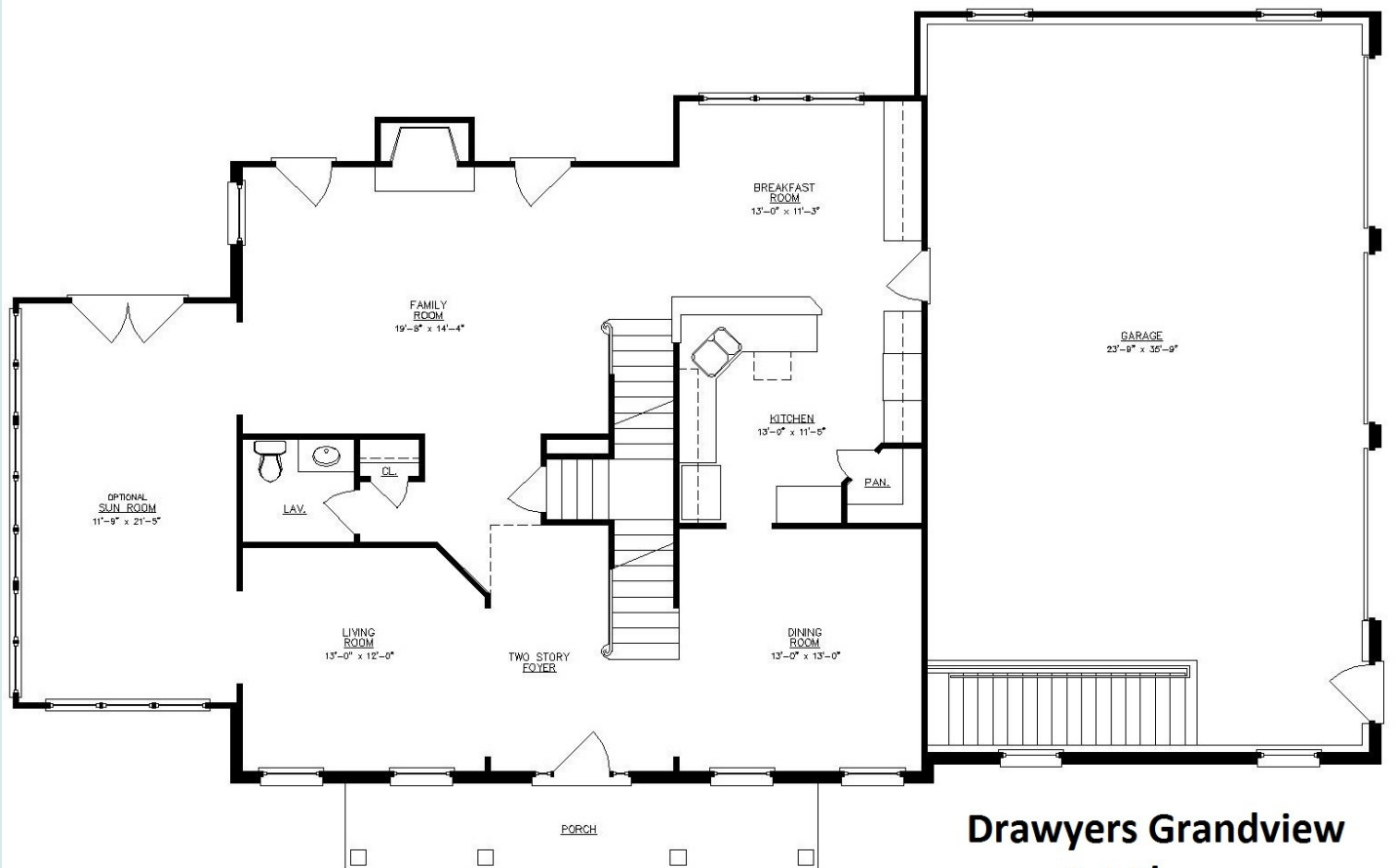


- **Second Floor Laundry**
- **Multiple walk-in closets**
- **4 Bedrooms**
- **2-5- 3.5 Bathrooms**
- **Many options and up-grades available**
- **Hardwood Flooring and Ceramic Tile is available**

Jillian's Way 302-328-0280 x 542 www.JilliansWay.com

Peyton's Grove 302-328-0280 x 544 www.PeytonsGrove.com

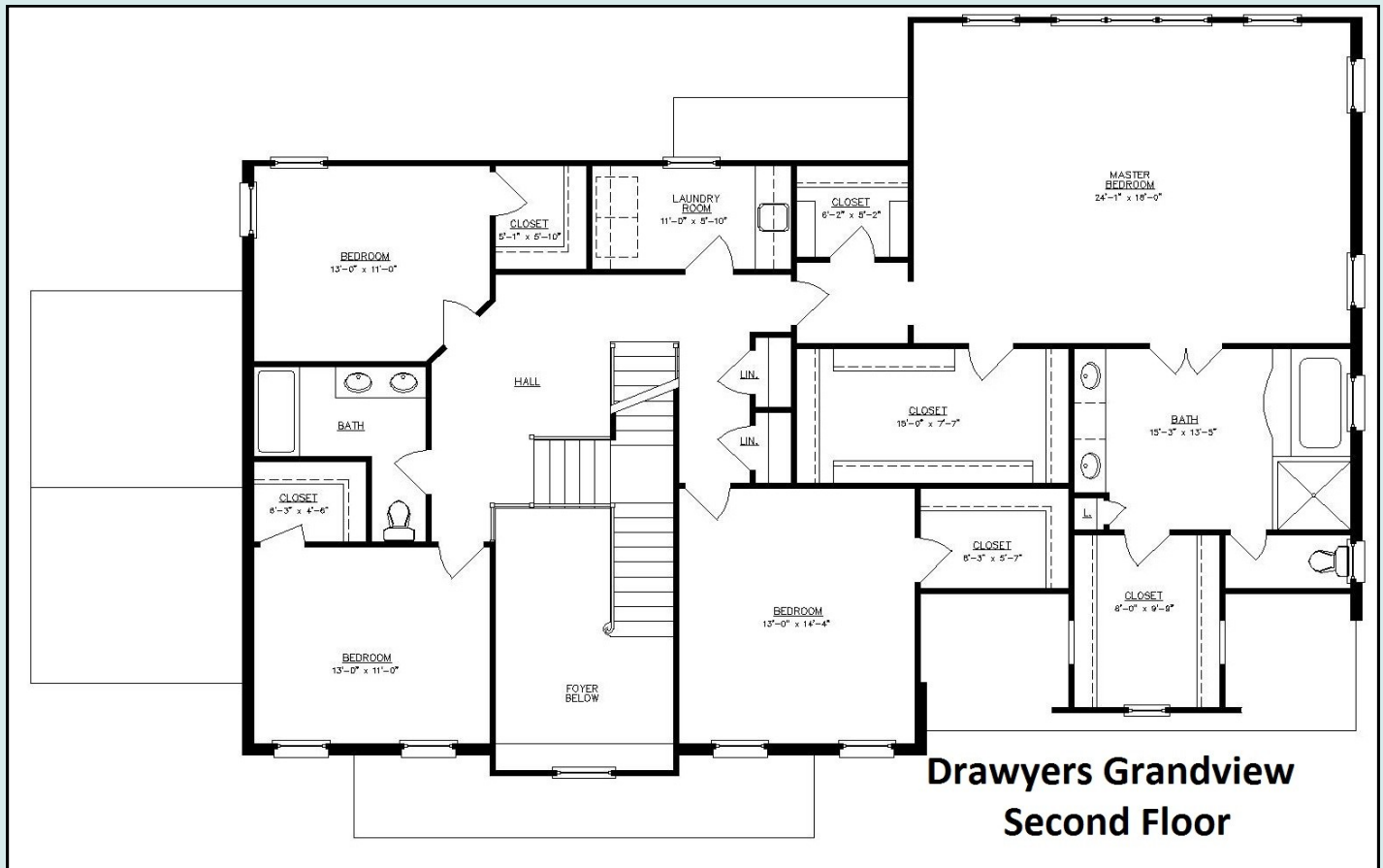
“ The First Floor Layout ”



**Drawyers Grandview
1st Floor**

Most Layouts Can Be Customized To Meet Your Individual Needs - Please Ask Our Sales Staff!

“ The Second Floor Layout ”



Most Layouts Can Be Customized To Meet Your Individual Needs - Please Ask Our Sales Staff!

“ Pictures From Previous Versions of The Drawyer’ s Grandview ”



Most Layouts Can Be Customized To Meet Your Individual Needs - Please Ask Our Sales Staff!