

The Christianshire Model



The Christianshire Model

The Christianshire Model is a spacious 4 bedroom Cape Cod style home with an open floor plan that is flexible and can be customized to meet your individual living style. Our standard layout has four large bedrooms, a second floor laundry and generous closet space. The large master suite comes standard with a well appointed master bath which includes a garden tub, shower, walk-in closet and double vanity. There are many other options available including hardwood floors, custom kitchen choices, nine foot first floor ceilings, gas fireplace, walk-out basements (when grade allows) and a finished basement. The front elevation can be completed with Stone, Brick, Siding or a combination of all three. We welcome your custom revisions! Please inquire with one of our sales staff for more information and options.



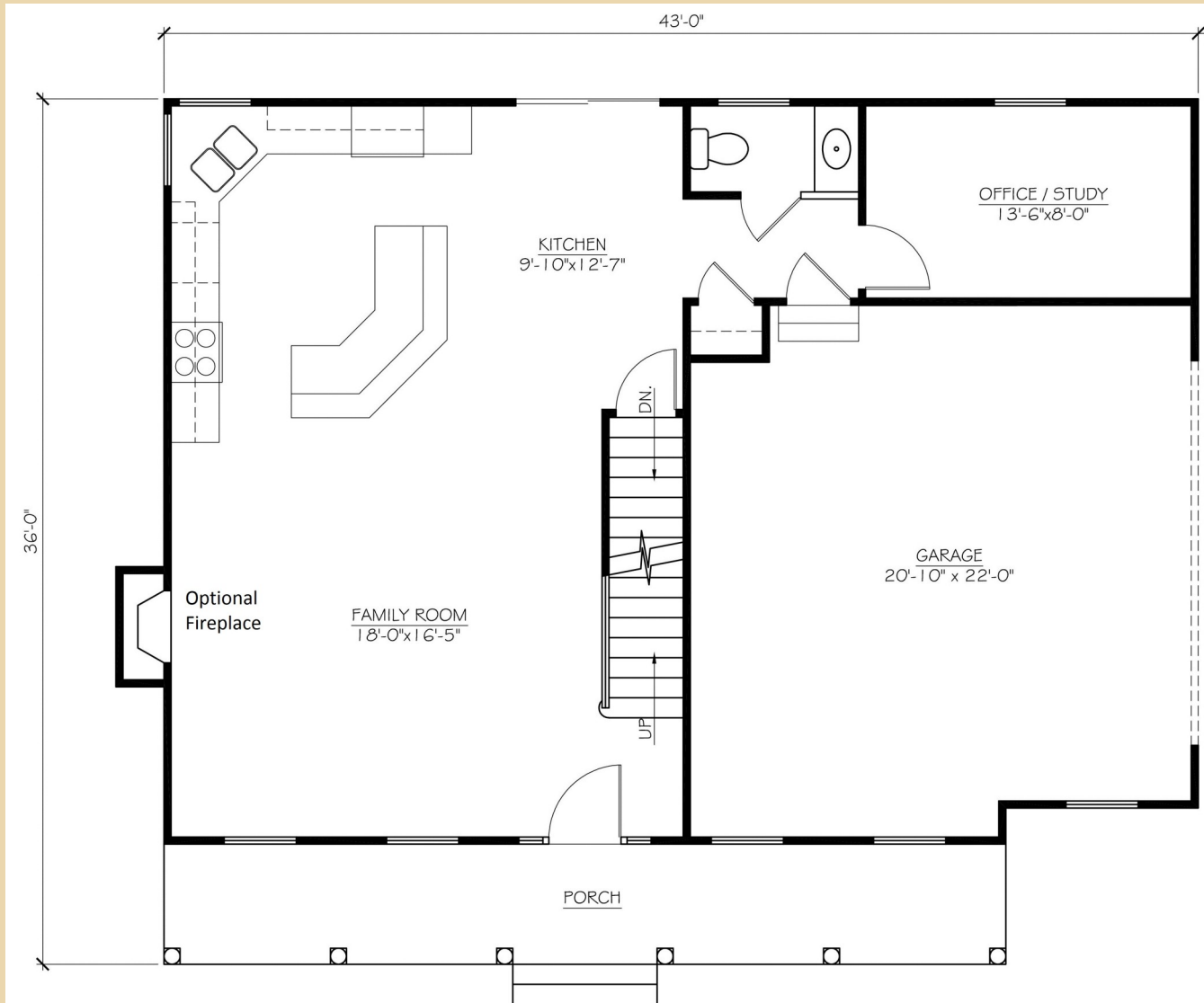
Christianshire Model Artist Sketch

Features

- **4 Spacious Bedrooms**
- **2.5 Bathrooms**
- **Many options and upgrades available**
- **8 or 9' 1st Floor Ceilings are available**
- **2 Car Garage**
- **Siding, Brick or Stone Elevations**
- **2nd Floor Laundry**
- **Approx 2200 sq ft**
- **Finished basement**

For Additional Information and Pricing Contact P.J. Bale
302-328-0280 x100 or by email PJ@FirstStateInc.com

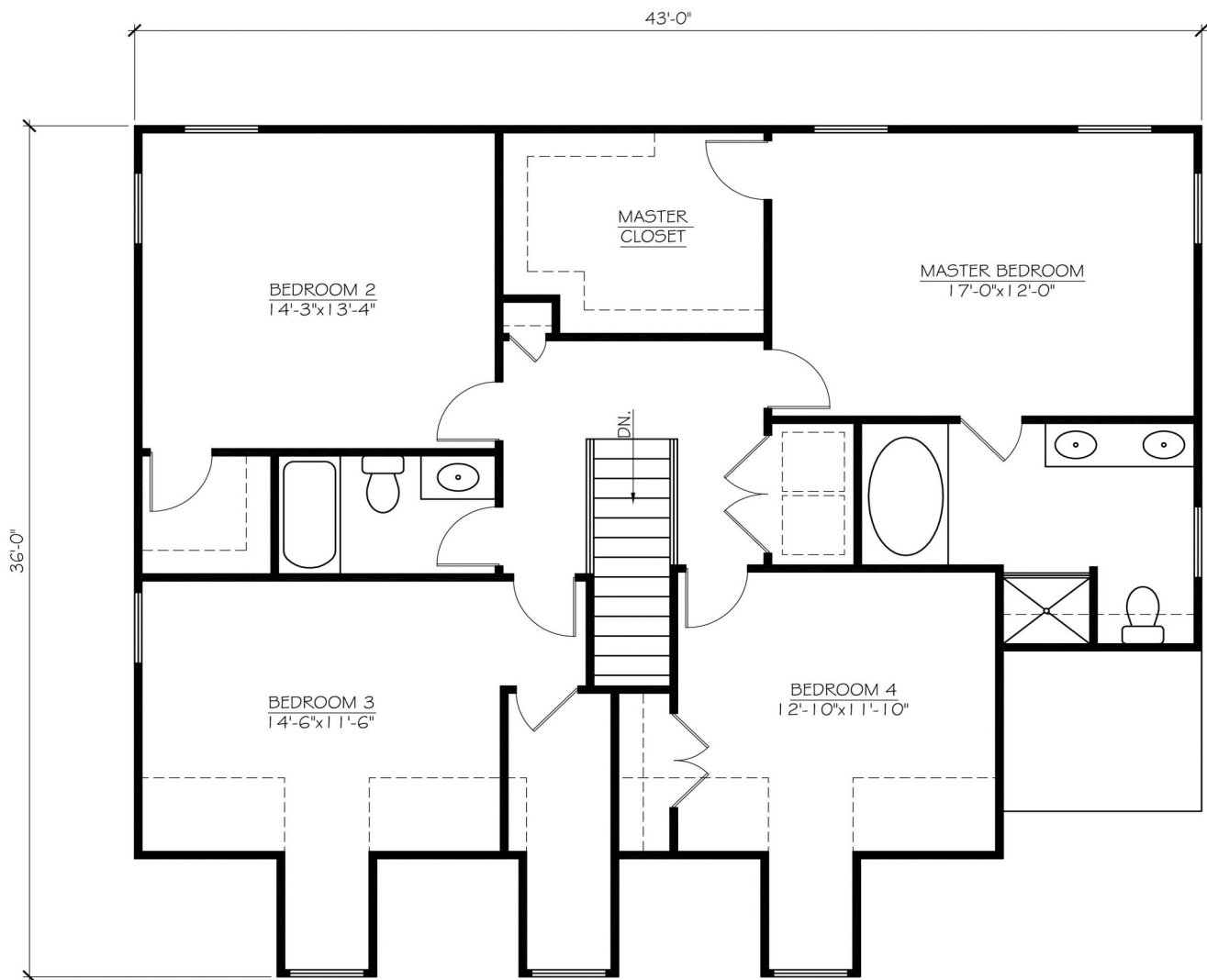
“ The First Floor Layout ”



Christianshire Model - First Floor Layout

Most Layouts Can Be Customized To Meet Your Individual Needs - Please Ask Our Sales Staff!

“ The Second Floor Layout



Christianshire Model - Second Floor Layout

Most Layouts Can Be Customized To Meet Your Individual Needs - Please Ask Our Sales Staff!

“Some other views!”



This Home Can Be Customized To Meet Your Individual Needs - Please Ask Our Sales Staff!

All Pricing and Terms are subject to change without notice. Sizes are approximate when specified.